



HARLEQUIN

X

Diane Hill

DESIGN BOOK





#OWNTHEROOM WITH

HARLEQUIN

X

Diane Hill

A BEAUTIFUL COLLECTION OF HAND PAINTED CHINOISERIE DESIGNS IN A CELEBRATION OF INDIVIDUALITY, NEW FOR SS22.

From her London studio, Diane Hill's meteoric rise in popularity has been far from surprising. With lockdown as its instigator, her talents and love of ancient Chinese design erupted across social media, catching the Harlequin team's eye.

Claire Greenfield, lead designer for Harlequin says, "Working with Diane's unique and colourful hand was hugely exciting. Her artwork really captures the spirit of individuality, introducing a modern take to traditional chinoiserie influences. Owning the room with beautifully painted motifs, Diane encourages homeowners to bring out their personality, by creating a look that represents who they are."

During the 18th century, Europe's desire for chinoiserie reached fever pitch, with exquisitely painted silks adorning the walls of high society homes. Exotic and alluring, they were the epitome of luxury and glamour. Utterly bespoke, original chinoiserie wallcoverings were, of course, highly regarded and hugely expensive.

Diane continues, "I'm absolutely overjoyed to be able to share my design passions with the rest of the world. Chinoiserie is such a beautiful, elevated art form and something I've wanted

to make more accessible for such a long time. Harlequin has given me the independence to create a range of wallpapers and fabrics that brings out everything that's been locked inside of me. It's like an extension of who I am. This opportunity feels very vibrant and uplifting - it's challenging the limits in terms of colour and style. It's like creating chinoiserie in a way that's never been seen before."

As part of its #OWNTHEROOM series, Harlequin opens up the previously unattainable world of silk art. A real treat for the eyes, gouache paint and cut traditional brushes enable fine and intricate detail, which has been carefully translated for digital production.

With designs named after pioneering and powerful women that blazed the trail for individuality, this collaboration encourages self-belief and self-expression. #OWNTHEROOM with designs that represent who you are. Be confident. Be expressive. Be you.

The launch comprises two books:
Harlequin x Diane Hill | Wallpaper
Harlequin x Diane Hill | Fabric

PLAY INTERVIEW WITH DIANE

@harlequinfw harlequin.sandersondesigngroup.com

A PROUD MEMBER OF SANDERSON DESIGN GROUP

MARSHA

Be bright. Be bold. Be you. This explosion of ultra large scale colour was inspired by a giant floral bouquet of poppies and peonies.

With its name attributed to Marsha P. Johnson, whose activism during the 1960's and 1970's had a huge impact on the LGBTQ+ community, this multidirectional design is not to be missed.

Marsha fabric is available in sumptuous cotton velvet or elegant cotton satin.

Available in fabric and wallpaper



ISABELLA

Printed on a lovely chalky ground, this wallpaper is named after Isabella Bird, the English explorer, writer and philanthropist.

Beautifully simple bamboo plants create a stripe effect, with their individual branches reaching gently outwards. Each elegant leaf has been painted in one single stroke to create a feeling of natural fluidity.

A fantastic coordinate, team Isabella with our Lady Alford and Lovelace designs.

Available as a wallpaper only



MARSHA

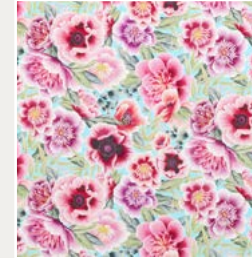
COLOURWAYS

MARSHA

Fabric & Wallpaper



MARSHA 121107
Fabric



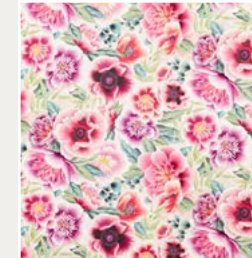
MARSHA 121108
Fabric



MARSHA 112902
Wallpaper



MARSHA 121109
Fabric



MARSHA 121110
Fabric



MARSHA 112903
Wallpaper

ISABELLA

Wallpaper



ISABELLA 112913
Wallpaper



ISABELLA 112914
Wallpaper



ISABELLA 112915
Wallpaper

Tap on product images to find out more

COLOURWAYS

ISABELLA

FLORENCE

Evocative of a perfect summer's day, Florence is inspired by the magic of ancient Chinese wallpapers.

Originally hand painted on silk using traditional brushes, techniques and watercolours, its beauty is pure escapism. A fresh, modern take on classic 18th century design, Florence shares a vibrant positivity.

Available as a wallpaper only



LADY ALFORD

Featuring bamboo stems entwined with delicate anemone blooms, this classically inspired design is closely related to its silk original. Reimagined and given a fresh, new look, Lady Alford is available in four updated colourways and printed on either cotton/linen or cotton/satin. Sharing a broad and far reaching appeal, luscious apple green and pops of vibrant pink contrast with the traditional pairing of blue and white. Lady Alford is an excellent choice for drapes.

Available in fabric and wallpaper





FLORENCE

COLOUR WAYS

LADY ALFORD

Fabric & Wallpaper



LADY ALFORD 121100
Fabric



LADY ALFORD 121101
Fabric



LADY ALFORD 121102
Fabric



LADY ALFORD 121103
Fabric



LADY ALFORD 112898
Wallpaper



LADY ALFORD 112899
Wallpaper



LADY ALFORD 112900
Wallpaper



LADY ALFORD 112901
Wallpaper

FLORENCE

Wallpaper



FLORENCE 112889
Wallpaper



FLORENCE 112890
Wallpaper



FLORENCE 112891
Wallpaper

Tap on product images to find out more

COLOUR WAYS

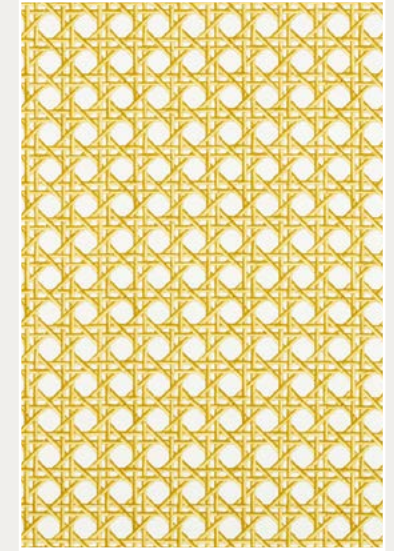
LADY ALFORD

MARIE

Feminine and floaty, Diane's love for botanical painting shines through in this soft, gentle design.

Named after Marie Curie, juicy pears and trailing vines, accented with delicate blossoms recreate a very English feel.

Available in fabric and wallpaper



LOVELACE

Use as a coordinate or standalone design, this colourful emerised cotton is a fabulous choice for upholstery and blinds. Displaying a comparatively simple geometric trellis, its woven bamboo pattern sits perfectly alongside our statement florals. Named after Ada Lovelace, the English mathematician and writer who is often regarded as the first computer programmer.

Available as fabric only



MARIE

COLOUR WAYS

MARIE

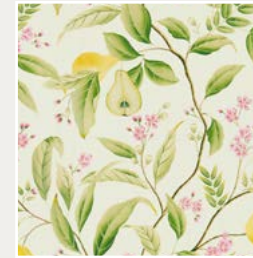
Fabric & Wallpaper



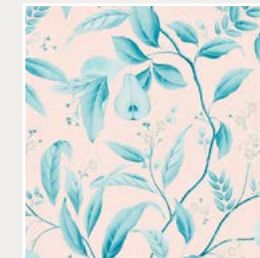
MARIE
Fabric 121116



MARIE
Fabric 121115



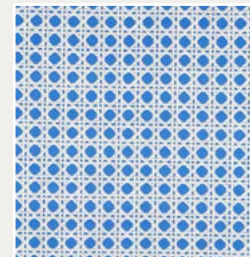
MARIE
Wallpaper 121109



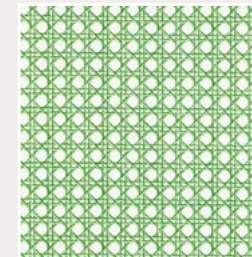
MARIE
Wallpaper 121110

LOVELACE

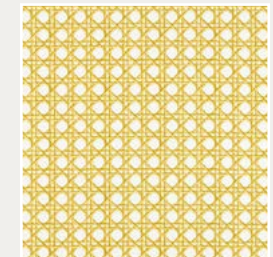
Fabric



LOVELACE
Fabric 121104



LOVELACE
Fabric 121105



LOVELACE
Fabric 121106

Tap on product images to find out more

COLOUR WAYS

LOVELACE



HARLEQUIN x *Diane Hill*

EMMELINE

Fabric

Named after the suffragette Emmeline Pankhurst and inspired by Korean butterfly art, this semi-transparent voile is wonderfully free-spirited. Intricate detailing adds a realism to delicate wings, fluttering across a spacious, open ground.

Available as fabric only



EMMELINE
Fabric

121114

Tap on product images to find out more

ROSA

Wallpaper

Named after Rosa Parks the American civil-rights activist, elegant cherry blooms cluster and cascade in this impactful wallpaper panel that's both soft yet bold. Fluid and fresh, Rosa's large-scale flowers are resplendent in their symmetry, introducing a different, almost geometric feel to the design. An excellent choice for high ceilings with blossom that cascades gracefully downwards, both colourways have a subtle mica ground.



ROSA
Wallpaper

112887



ROSA
Wallpaper

112888

Tap on product images to find out more

GET THE LOOK





HARLEQUIN x Diane Hill

NELLIE

Wallpaper

Diane created this highly figurative wallpaper which is named after the American journalist, Nellie Bly, who was best known for her 1889 record-breaking trip around the world. Drawing inspiration from Indian miniature painting and her own botanical artworks, Nellie features golden kadamba flowers (often depicted in Lord Krishna paintings) alongside an interpretation of the malabar giant squirrel. This design is statemental and brilliantly characterful.



NELLIE
Wallpaper

112904



NELLIE
Wallpaper

112905

Tap on product images to find out more

VALENTINA

Wallpaper

Inspired by Ohara Koson's famous designs, beautifully detailed spoonbills, hand painted in watercolour, contrast against the naivety of lightly flowing willow branches, painted in just one stroke. The roseate spoonbills recreate the bright pinks found in traditional chinoiserie. The Exhale colourway is produced on a subtle metallic ground.



VALENTINA
Wallpaper 112911



VALENTINA
Wallpaper 112912

GET THE LOOK



Tap on product images to find out more

ELLA

Fabric

This beautiful cotton/linen is a sleek interpretation of an antique chinoiserie wallpaper, depicting stylised birds and ripe fruits. A modern take on a traditional panoramic scene, it's been reinterpreted into a repeating pattern, where less is more. The focus is on the design's almost 3D leaves and hand brushed wash effect ground, that's crafted to look like the sky.



ELLA
Fabric

121111



ELLA
Fabric

121112



ELLA
Fabric

121113

HARLEQUIN × *Deane Hill*

Tap on product images to find out more

ELLA

Wallpaper

This charming interpretation of an antique chinoiserie wallpaper depicts stylised birds and ripe fruits. A modern take on a traditional panoramic scene, it's been reinterpreted into a repeating pattern, where less is more. The focus is on the design's almost 3D leaves and hand brushed wash effect ground, that's crafted to look like the sky.



ELLA
Wallpaper 112906



ELLA
Wallpaper 112907



ELLA
Wallpaper 112908

GET THE LOOK



Tap on product images to find out more



ELLA 121111



ELLA 121112



ELLA 121113



EMMELINE 121114



LADY ALFORD 121100



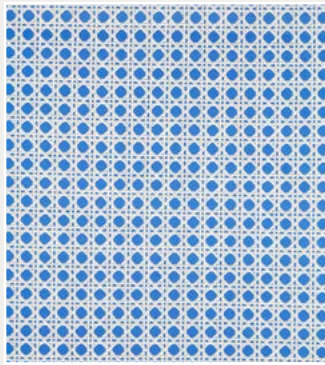
LADY ALFORD 121101



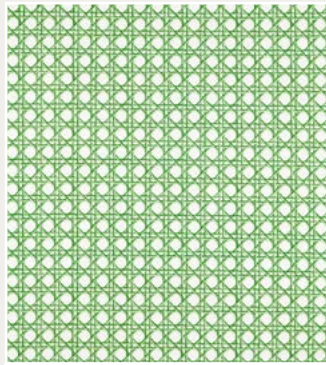
LADY ALFORD 121102



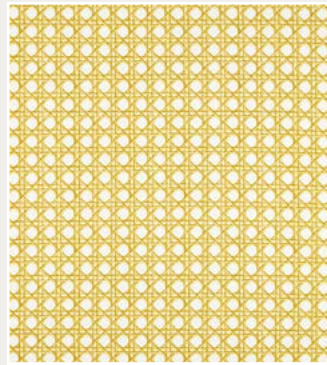
LADY ALFORD 121103



LOVELACE 121104



LOVELACE 121105



LOVELACE 121106



MARIE 121115



MARIE 121116



MARSHA 121107



MARSHA 121108



MARSHA 121109



MARSHA 121110



ELLA 112906



ELLA 112907



ELLA 112908



FLORENCE 112889



FLORENCE 112890



FLORENCE 112891



ISABELLA 112913



ISABELLA 112914



ISABELLA 112915



LADY ALFORD 112898



LADY ALFORD 112899



LADY ALFORD 112900



LADY ALFORD 112901



MARIE 112909



MARIE 112910



MARSHA 112902



MARSHA 112903



NELLIE 112904



NELLIE 112905



ROSA 112887



ROSA 112888



VALENTINA 112911



VALENTINA 112912

HARLEQUIN

X

Diare Hill

CONTACT INFORMATION

SANDERSON DESIGN GROUP HEAD OFFICE

Chalfont House, Oxford Road,
Denham UB9 4DX
Tel: + 44 (0) 20 3457 5862

PRESS OFFICE

Email: press@sandersondesigngroup.com
Tel: + 44 (0) 1895 221005

CONSUMER & TRADE ENQUIRIES

Email: enquiries@sandersondesigngroup.com

For further information:

brand.sandersondesigngroup.com

To find your nearest stockist:

brand.sandersondesigngroup.com/find-a-retailer

LONDON SHOWROOM

Design Centre Chelsea Harbour, First Floor,
South Dome, Lots Road, London, SW10 0XE

Tel: + 44 203 903 3700

Email: showroom@sandersondesigngroup.com

NEW YORK SHOWROOM

D&D Building, 979 3rd Avenue, S
uite 409, New York, 10022

Tel: +1 800 395 8760

Email: sales-ny@zoffany.com

CHICAGO SHOWROOM

222 Merchandise Mart Plaza, Suite 6-117,
Chicago 60654

Tel: +1 312 929 2058

Email: sales-chicago@sandersondesigngroup.com

DUBAI SHOWROOM

The Prism Tower, Office 2708, Floor 27,
PO Box 391982, Business Bay, Dubai,
United Arab Emirates

Tel: +971 4361 9766

Email: infome@sandersondesigngroup.com

NETHERLANDS SHOWROOM

ETC Licht & Interieur, Randweg 20,
4104 AC Culemborg

Tel: +31 65349 3696

Email: international@sandersondesigngroup.com

GERMANY SHOWROOM

Kronenstrasse 4, 76133 Karlsruhe

Tel: +49 721 981 985 60

Email: verkauf@sandersondesigngroup.com

RUSSIA SHOWROOM

Anataliya Zhivova 10, 123100, Moscow

Tel: +7 985 442 7144 / +7 926 698 7132

Email: sandersonrussia@gmail.com

[@harlequinfw](https://www.instagram.com/harlequinfw) harlequin.sandersondesigngroup.com

A PROUD MEMBER OF SANDERSON DESIGN GROUP

