



HARLEQUIN

COLOUR 4

DIGITAL DESIGN BOOK

HARLEQUIN

#OWNTHEROOM WITH HARLEQUIN COLOUR 4, NEW FOR 2023.

From atmospheric skies to forested landscapes, our world's gentle flow is the rhythm that surrounds us. A quartet of essential elements, earth, water, air and fire sustain our everyday existence. Perfectly balanced, yet complex and varied, discover a carefully designed ecosystem that allows all to flourish.

Seeing the natural world through renewed eyes, Harlequin presents Colour 4, the latest installation in its successful Colour series. Featuring original artwork in a range of styles, this launch is inspired by nature's abundant beauty and all-encompassing colour.

A continuation of Harlequin's signature looks, delve deeper into Renew, Rewild, Retreat, and Reflect, as each look aligns with a classical element in an exciting, conceptual way. Bringing earth, water, air and fire to life, Colour 4 celebrates a rich and diverse palette, enhanced by a spectrum of pared back, authentic tones.

Comprising 27 wallpapers such as Air's celestial panel and Foresta's diffused painterly woodland, this collection is designed for dreaming, creating relaxed, immersive interiors for every style of home.

Reminiscent of organic habitats, 37 fabrics with a handmade feel, such as chunky stitching and painterly motifs, join delicate interpretations of peonies and abstract woodlands. Making more than a visual statement, Eco Takara, an evolution of our iconic Takara fabric is now made from 92% recycled polyester.

Most fabrics in the collection have been produced using our new digital pigment inks, which thanks to their low water consumption and energy usage, are considered one of the most sustainable and environmentally friendly ink options available. Additionally, Better Cotton Initiative (BCI) cotton has been used throughout and our materials are all responsibly sourced and ethically produced. Alongside Colour 4's fabrics, all wallpapers are printed in the UK on FSC certified substrates, from sustainable, traceable sources.

ALL WALLPAPERS AND FABRICS PRINTED IN THE UK

To see the collection in its entirety, please visit
[harlequin.sandersondesigngroup.com](https://www.harlequin.sandersondesigngroup.com)
#harlequincolour #OWNTHEROOM



HARLEQUIN

COLOUR 4

Four signature looks, your unique style.

#OWNTHEROOM

RENEW

AIR



RETREAT

WATER



REWILD

EARTH



REFLECT

FIRE



RENEW

AIR

Enveloping the earth with its airy glow, Renew is celestial, uplifting and regenerative. Small movements of colour adorn tinted hues, adding perspective to this environmentally inspired look. Elegant and ethereal, soft reflective colours highlight the intricacies of subtly detailed design.





Make time to dream with our ethereal Air wallpaper panel that repeats from top to bottom and side to side. Gracefully drifting across endless skies, atmospheric clouds introduce an effortlessly elegant, pared back look.

GET YOUR LOOK



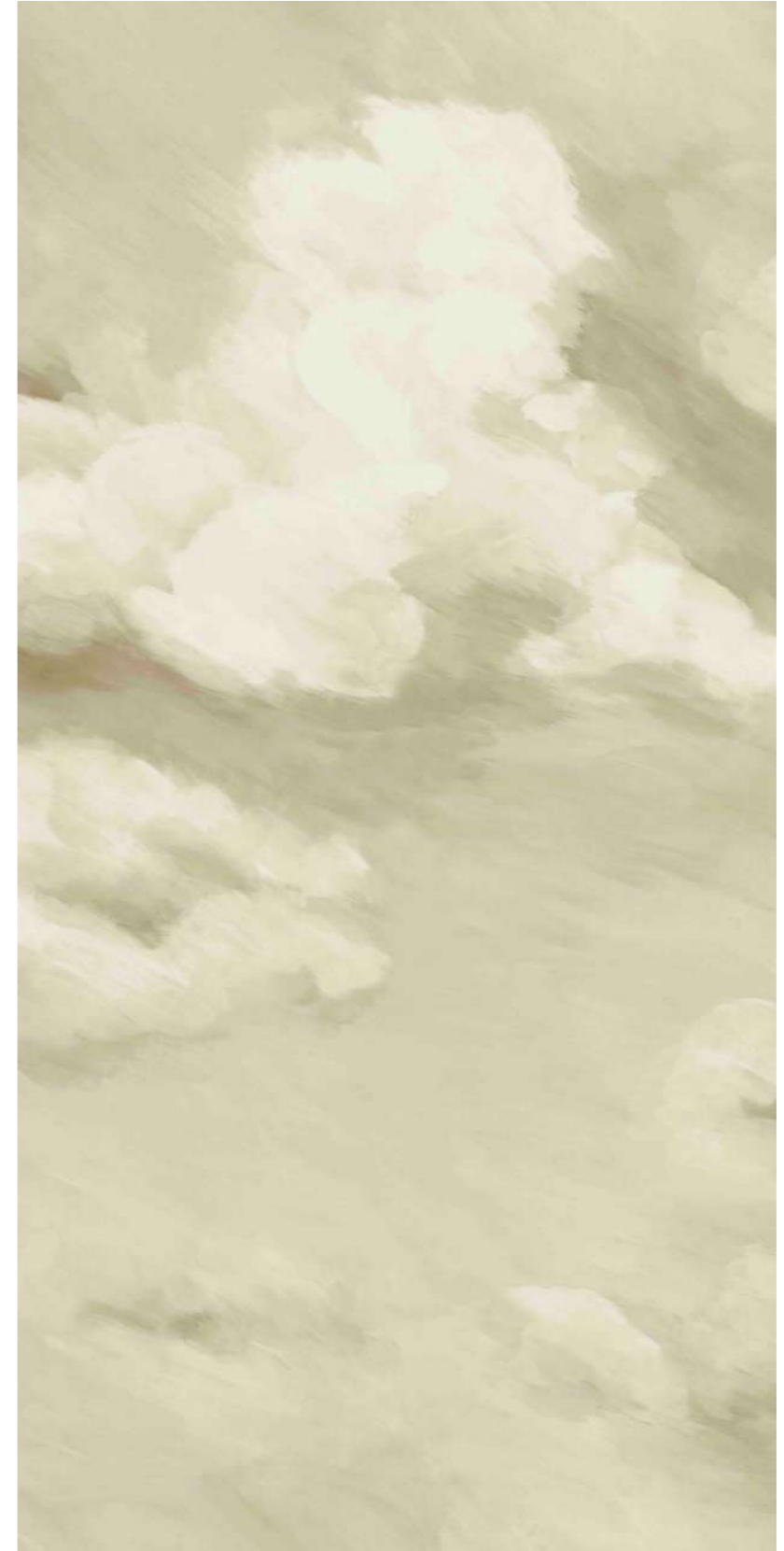
FORESTA 121151



ETERNAL OAK 113022



MINI WOOD FROG 121169



AIR 113002



GET YOUR LOOK

COLOUR PROPORTIONS



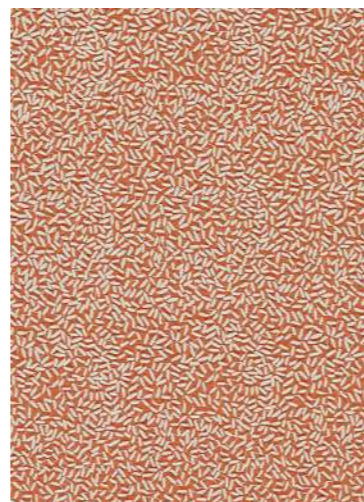
FLORENT

121157



AIR

113003



SOW

133924



GROUNDED

113006



Sharing a well-balanced, nostalgic feel, Florent is a painterly cotton/linen adorned with intricately detailed and richly coloured floral layers. A real softness runs throughout, created by a gentle flow that extends to the design's matching wallpaper.

RENEW FLORENT



RETREAT

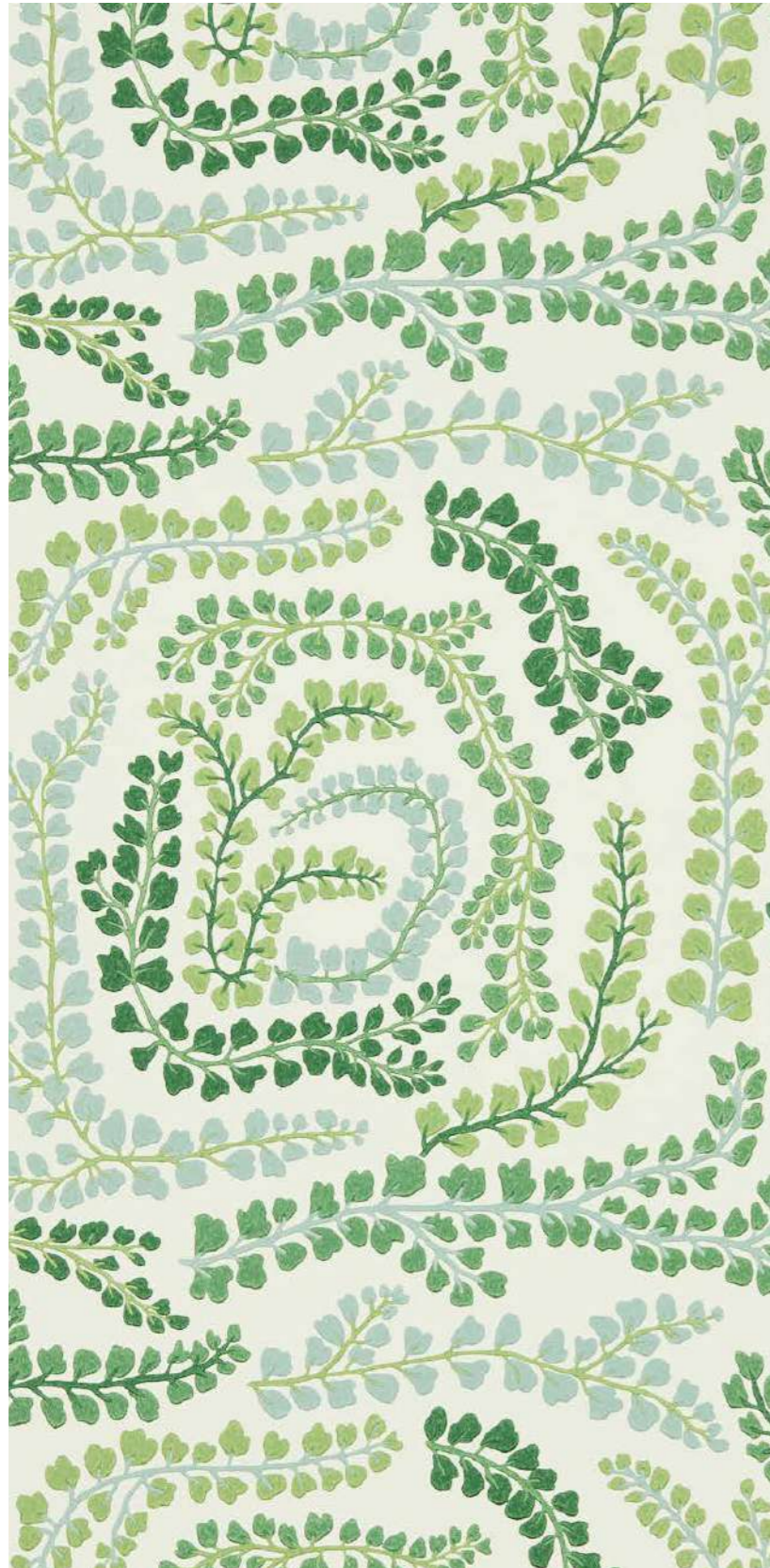
WATER

Water hydrates the earth, creating beautiful flora and fauna, which is the inspiration for this adaptive look. A tranquil palette of naturally elegant colour, Retreat shares a nostalgic intensity, accented by chalky textures.





GET YOUR LOOK



FAYOLA

113021



ERTHA

121160



ONNI

133929



FLORENT

113015



Imagine feeling cocooned by the calmness of nature and making patterns with favourite sprigs and delicate leaves. Inspired by wild clover and maidenhair fern, this stylised wallpaper reflects the semi-permanency of woodland art. Surface printing allows for a slightly naïve, handmade look.



Sharing a well-balanced, nostalgic feel, Florent is a painterly floral wallpaper with intricately detailed watercolour layers. A gentle softness runs throughout, creating a flow that extends to the design's matching fabric.

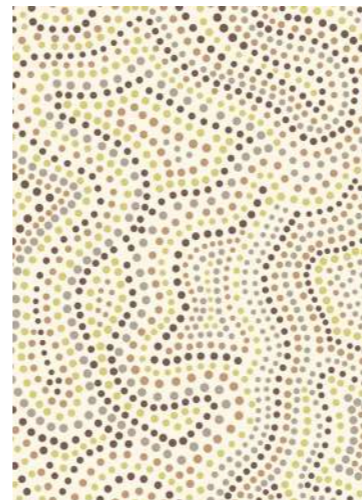
GET YOUR LOOK



FAYOLA 113018



WOOD FROG VELVET 121162



SUNSTONE 133930



FLORENT 113014



REWILD

EARTH

Earth is the perfect biosphere, allowing all life to exist and evolve. Filling our homes with layered bursts of rich pigment, Rewild celebrates the beauty of nature, with joyous uninhibited pattern, that refreshes our minds and our interiors.

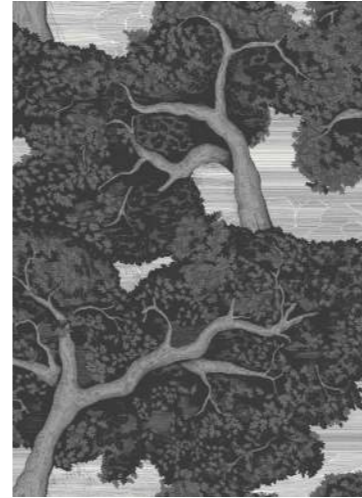


REWILD FORESTA



Explore an interpretive woodland filled with beautifully diffused devoré leaves, hand painted on silk and translated to create a nature inspired wallpaper. An immersive design with a subtle all over linen emboss, Foresta is a vista of colour, movement and technique that looks like fabric on the wall.

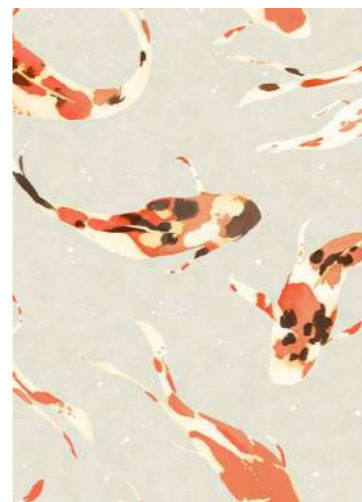
GET YOUR LOOK



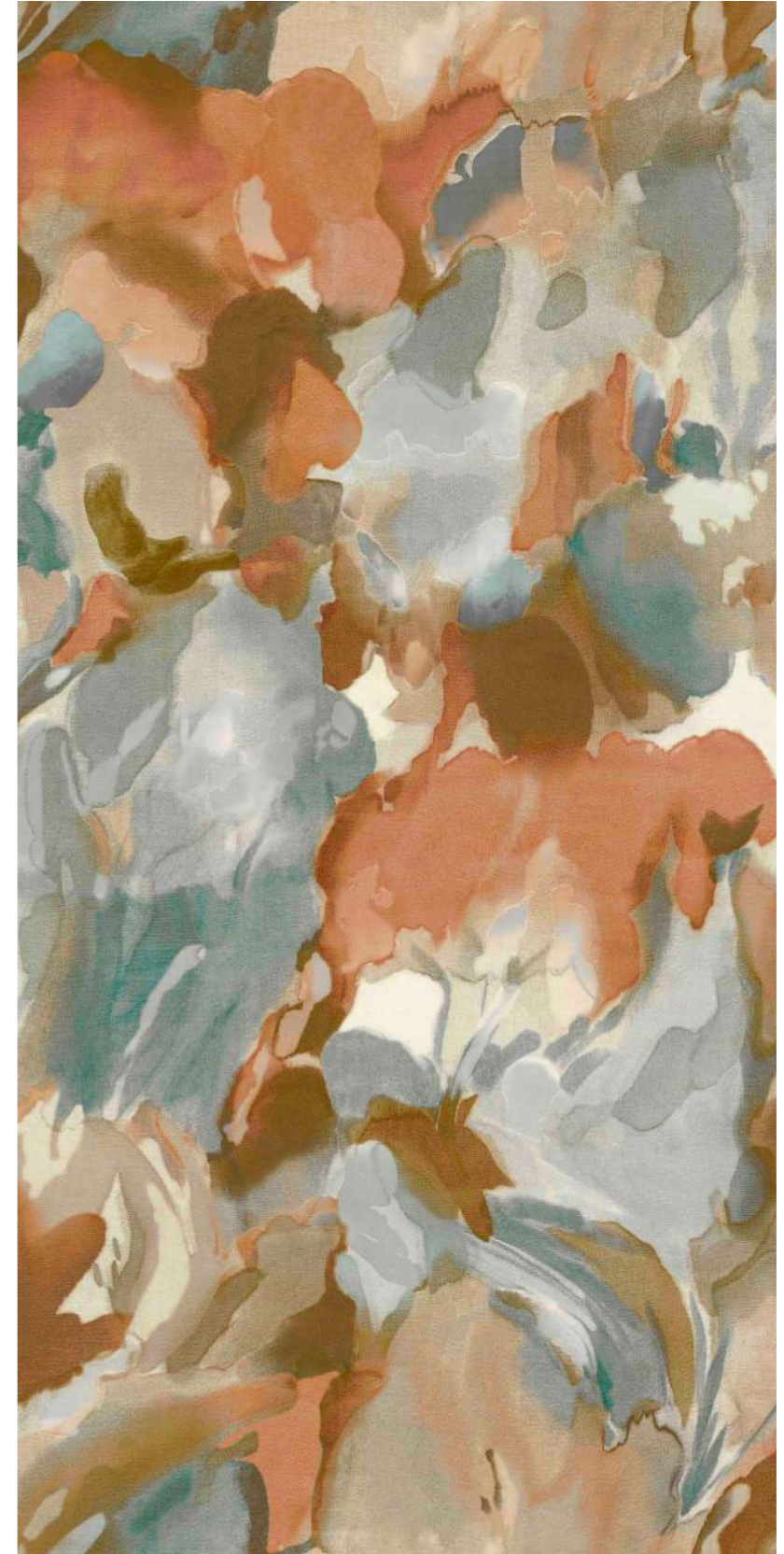
ETERNAL OAK 113040



FLORENT 121156



KOI 110903



FORESTA 113001

COLOUR PROPORTIONS



GET YOUR LOOK

COLOUR PROPORTIONS



KALINA

113010



KALINA

121167



FAYOLA

113019



FORESTA
VELVET

121152



Harlequin's take on a botanical drawing, our bouquet of finely illustrated wild orchids create this tranquil scene. Vibrant colours, contrast on a navy ground, making petals pop.

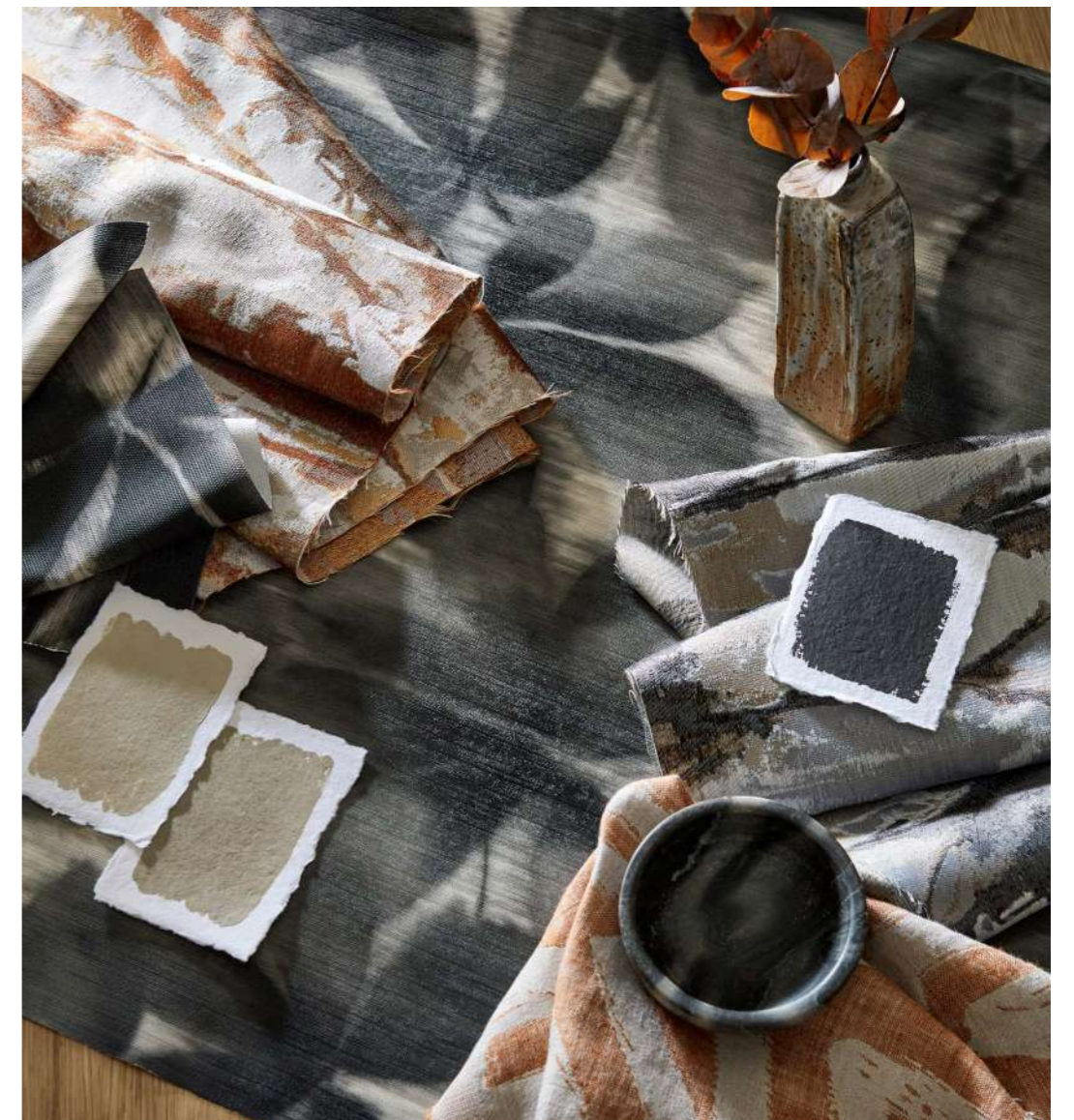
REWILD KALINA



REFLECT

FIRE

The creation of fire was the beginning of civilisation. Reflect's simple, strong designs align with obscured organic patterns and architectural influences that harmoniously blend edgy angularity with powerful, traditional design.





GET YOUR LOOK



GROUNDED

113005



ECO TAKARA 133916



IZUMI 133921



SABKHA

111613



Be at one with nature and stay grounded amongst the permanency of layered horse chestnut leaves. Originally painted onto a silk strie and awash with plentiful movement, this transitional design shares a beautiful flat colour. Finished with a textural emboss to appear like fabric on the wall.



With a gorgeous drape and beautiful softness, Izumi is a reversible abstract zigzag made from 95% linen. Inspired by cave paintings, widely considered the earliest forms of art, its loose weave and painterly brush marks reveal an organic nature.

GET YOUR LOOK



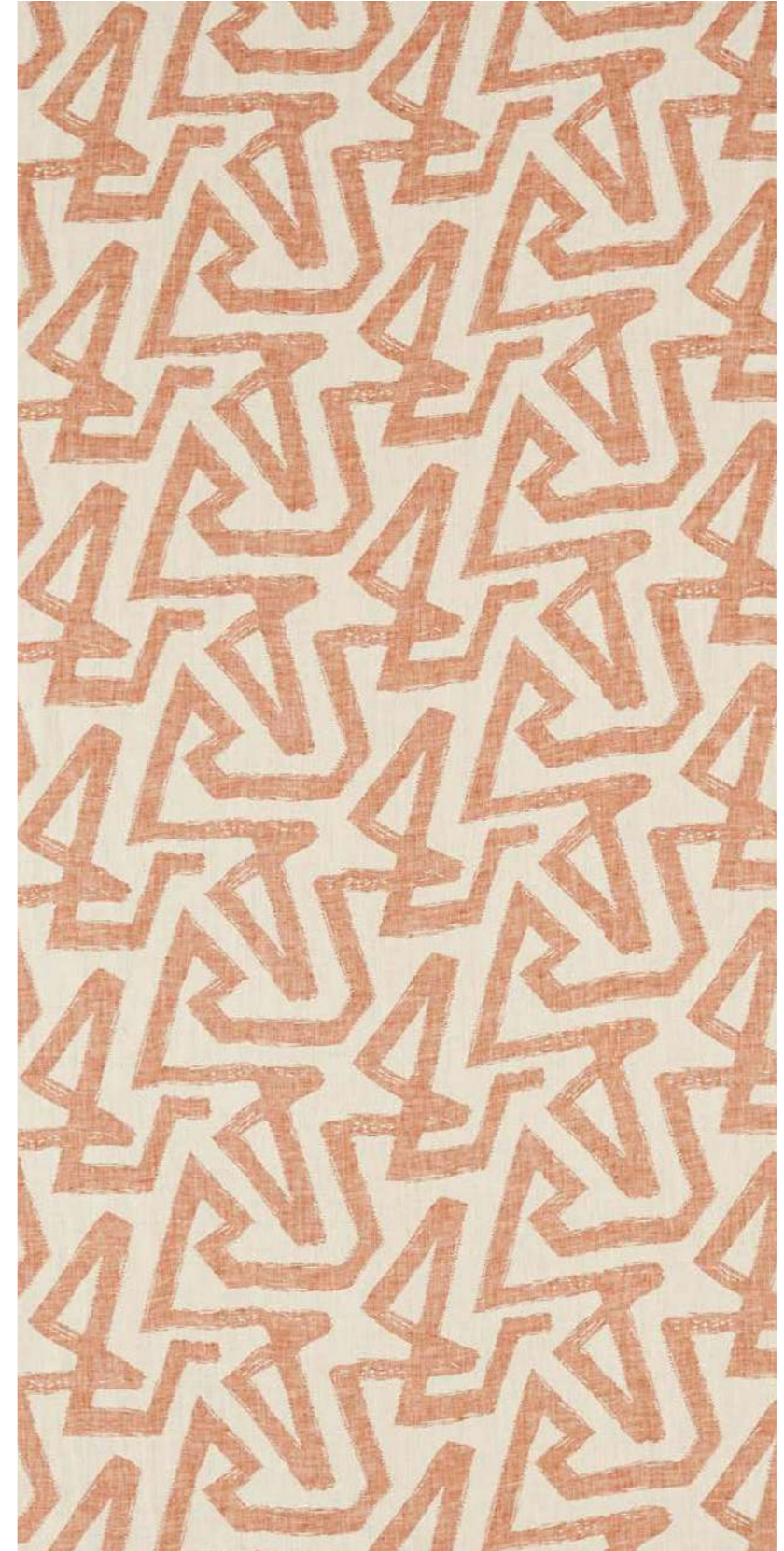
GROUNDED 121155



VITRUVIUS 112064



ECO TAKARA 133918



IZUMI 133920

COLOUR PROPORTIONS



LET'S TALK COLOUR SCIENCE

It's no secret that the colour choices we make for our interiors have a dramatic effect on how we feel. But while we all know the benefits of a carefully considered palette, how do we go a step further and connect spaces with people?

In a specially commissioned white paper, colour scientists Professor Stephen Westland and Soojin Lee from Leeds University, joined the Harlequin team to reveal the theory behind how our colour choices shape who we are.

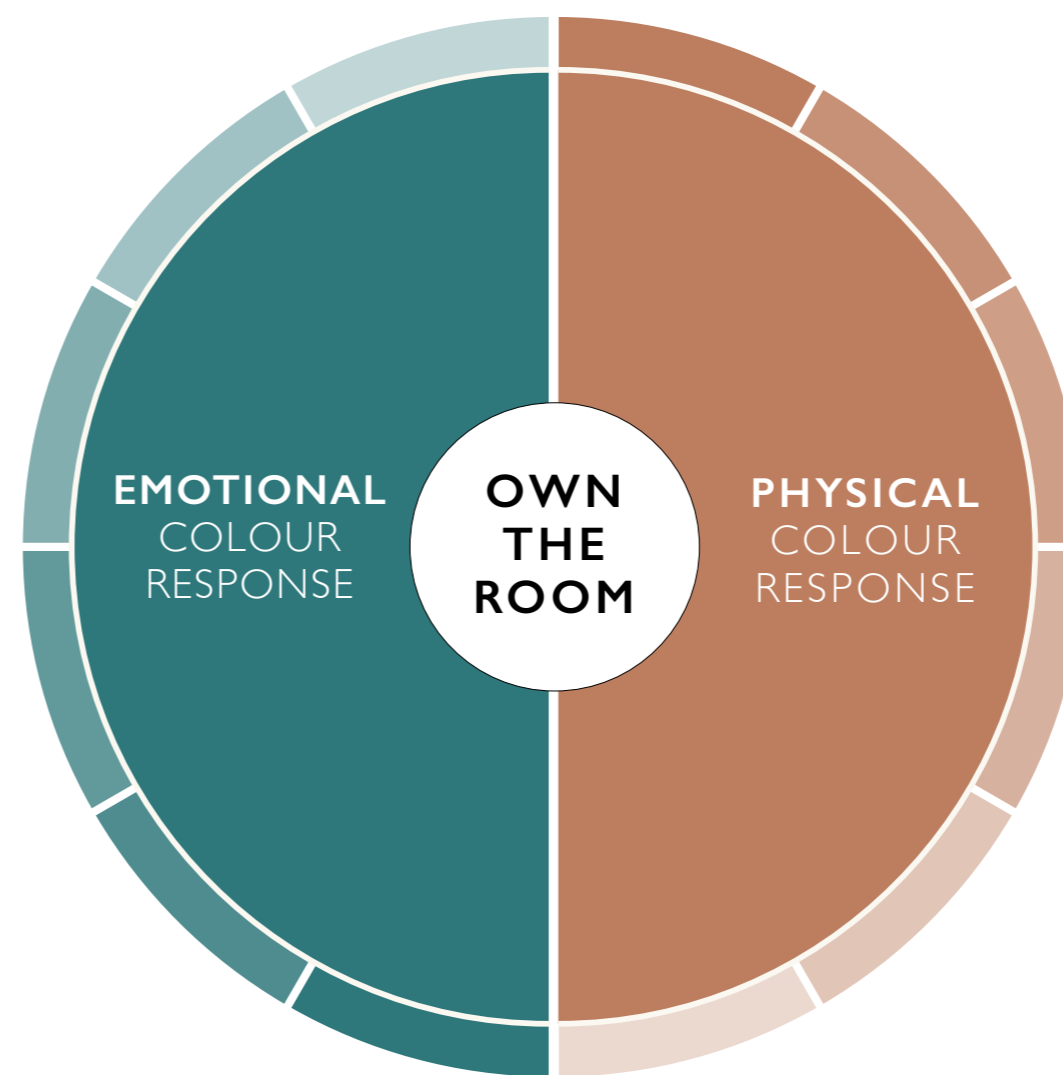
Their findings explain that the use of colour in any interior affects both our physical and emotional wellbeing. Armed with such incredible insight, we've been hard at work devising innovative ways to 'Crack Your Colour Code'.

Our purpose is to bring the joy of colour into every home, inspiring people to be bold and discover their own unique interior style, creating a space that reflects self-expression and emotional happiness.

Truly owning the room requires more than picking designs we admire. It looks for an emotional understanding of why we're attracted to certain colours, schemes and styles. It confirms that our interiors matter.

Our colour code is the key, now let's own the room.

To find out more and read the whitepaper titled 'Is the colour of your home making you happy', [click here](#).



EMOTIONAL COLOUR RESPONSE

Emotional responses are highly individualised, varying depending on a person's age, culture, and personal history.

Choose the colours, patterns and designs you love and make you feel your best! Get personalised recommendations based upon your colour-preferences and unique style.

PHYSICAL COLOUR RESPONSE

Physical responses to colour intensity impact everything from sleep quality to internal body temperature.

Get top tips on lighting and colour to promote wellbeing, creating your unique interior and happy place.



WE'RE MAKING THIS PERSONAL

Own The Room with Harlequin

Feel empowered to go bold in spaces that matter with Harlequin's beautifully coloured fabric, wallpaper and homeware. Vibrant pattern brings the joy of self-expression into the home, creating a space that is uniquely yours.

All our designs have been carefully edited into four signature 'looks' named Rewild, Retreat, Reflect and Renew. Discover which look represents who you are with our fun, interactive quiz.

TAKE THE QUIZ

Find your look and **#OWNTHEROOM**



AIR 113003



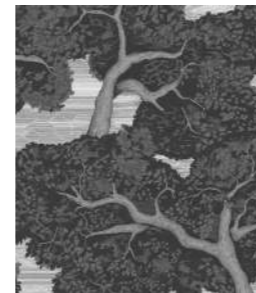
AIR 113002



ETERNAL OAK 113022



ETERNAL OAK 113023



ETERNAL OAK 113040



CHACONIA 111633



CHACONIA 111634



FAYOLA 113018



FAYOLA 113019



FAYOLA 113020



FAYOLA 113021



FLORENT 113014



FLORENT 113015



FLORENT 113016



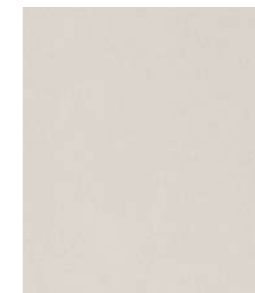
FLORENT 113017



FORESTA 113000



FORESTA 113001



FORMATION 111588



FORMATION 111591



GROUNDED 113004



GROUNDED 113005



GROUNDED 113006



GROUNDED 113007



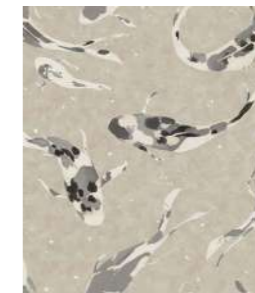
KALINA 113008



KALINA 113009



KALINA 113010



KOI 110900



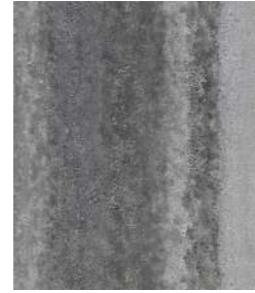
KOI 110901



KOI 110902



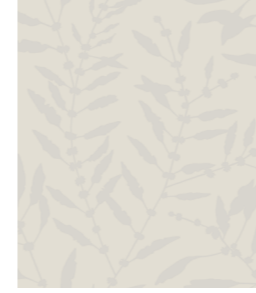
KOI 110903



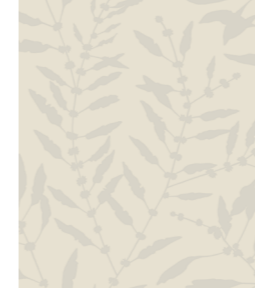
SABKHA 111613



LEAF SABKHA 111615



CHACONIA SHIMMER 111658



CHACONIA SHIMMER 111659



SUNSTONE 113041



SUNSTONE 113042



VITRUVIUS 112060



VITRUVIUS 112063



VITRUVIUS 112064



VITRUVIUS 112065



WOOD FROG 113011



WOOD FROG 113012



WOOD FROG 113013

FABRIC INDEX



CHACONIA 132291



CHACONIA 132292



CHROMA 131851



ERTHA 121160



ERTHA 121161



ECO TAKARA 133916



ECO TAKARA 133917



ECO TAKARA 133918



ECO TAKARA 133919



FAYOLA 121164



FAYOLA 121165



FAYOLA 121166



FLORENT 121156



FLORENT 121157



FLORENT 121158



FLORENT 121159



FORESTA VELVET 121150



FORESTA 121151



FORESTA VELVET 121152



FORMATION 132214



FORMATION 132215



GROUNDED 121153



GROUNDED 121154



GROUNDED 121155



IZUMI 133920



IZUMI 133921



IZUMI 133922



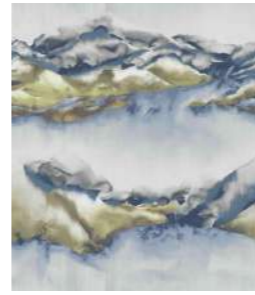
IZUMI 133923



KALINA 121167



KALINA 121168



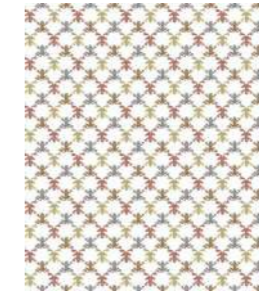
KAILANI 120605



LIMOSA 120338



LIMOSA 120340



MINI WOOD FROG 121169



MINI WOOD FROG 121170



ONNI 133927



ONNI 133928



ONNI 133929



POSTELIA 120594



POSTELIA 120595



POSTELIA 120596



POSTELIA 120597



SOW 133924



SOW 133925



SOW 133926



SUNSTONE 133931



SUNSTONE 133930



WOOD FROG 121162



WOOD FROG 121163



SANDERSON DESIGN GROUP HEAD OFFICE

Chalfont House, Oxford Road,
Denham UB9 4DX

Tel: + 44 (0) 20 3457 5862

PRESS OFFICE

Email: press@sandersondesigngroup.com

Tel: + 44 (0) 1895 221005

CONSUMER & TRADE ENQUIRIES

Email: enquiries@sandersondesigngroup.com

For further information:

brand.sandersondesigngroup.com

To find your nearest stockist:

brand.sandersondesigngroup.com/find-a-retailer

LONDON SHOWROOM

Design Centre Chelsea Harbour, First Floor,
South Dome, Lots Road, London, SW10 0XE

Tel: + 44 203 903 3700

Email: showroom@sandersondesigngroup.com

NEW YORK SHOWROOM

D&D Building, 979 3rd Avenue, Suite 409

New York, NY 10022

Tel +1 212 319 7220

sales-ny@sandersondesigngroup.com

CHICAGO SHOWROOM

222 Merchandise Mart Place, Suite 6-117A
Chicago, IL 60654

Tel +1 312 929 2058

sales-chicago@sandersondesigngroup.com

DUBAI SHOWROOM

The Prism Tower, Office 2708, Floor 27,
PO Box 391982, Business Bay, Dubai,

United Arab Emirates

Tel: +971 4361 9766

Email: infome@sandersondesigngroup.com

NETHERLANDS SHOWROOM

ETC Licht & Interieur, Randweg 20,
4104 AC Culemborg

Tel: +31 65349 3696

Email: international@sandersondesigngroup.com

GERMANY SHOWROOM

Kronenstrasse 4, 76133 Karlsruhe

Tel: +49 721 981 985 60

Email: verkauf@sandersondesigngroup.com

#OWNTHEROOM

harlequin.sandersondesigngroup.com

A PROUD MEMBER OF **SANDERSON DESIGN GROUP**