



HARLEQUIN

PERFORMANCE VELVETS

NEW FOR SS24



HARLEQUIN

PERFORMANCE VELVET

A SUPERB RANGE OF VELVETS IN 50 HARLEQUIN HUES BRING COLOUR AND VIBRANCY TO SS24.

This performance velvet is the most beautiful coordinate, with a soft pile and a broad spectrum of tones to suit all interiors.

Beautifully coloured and well made, the fabric meets the demands of performance fabrics with durability and colourfastness at the heart of the specification. A CFC-free, water and stain-resistant finish provides a high level of stain and water repellency.

Performance Velvets achieve a Martindale abrasion rating of 70,000 rubs.

@harlequinfw | harlequin.sandersondesigngroup.com

NEW FOR SS24

PERFORMANCE VELVETS

A temptingly soft handle characterises this performance velvet fabric. In a palette of 50 signature Harlequin shades, from soft neutrals to bolder brights, Performance Velvets is a designer's essential toolkit and a go-to for interior schemes.

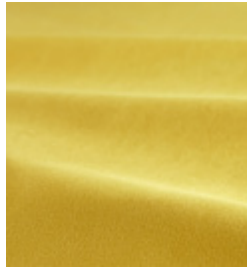
This plush velvet achieves an outstanding Martindale abrasion rating of 70,000 rubs. Our CFC-free finish provides a high level of stain and water-repellency.



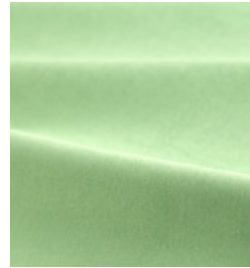
PERFORMANCE VELVETS INDEX



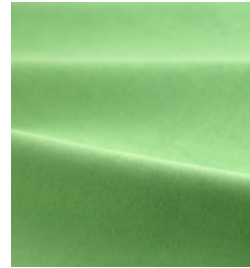
PERFORMANCE VELVET 134129



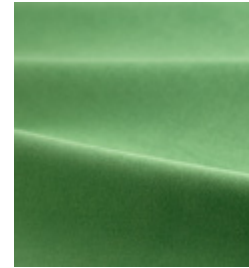
PERFORMANCE VELVET 134130



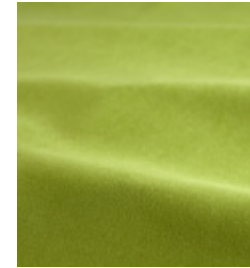
PERFORMANCE VELVET 134131



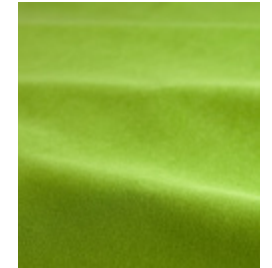
PERFORMANCE VELVET 134132



PERFORMANCE VELVET 134133



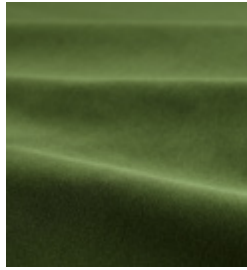
PERFORMANCE VELVET 134134



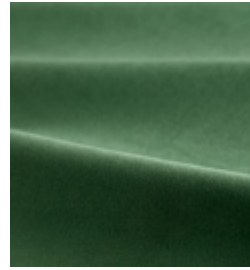
PERFORMANCE VELVET 134135



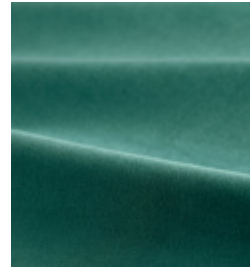
PERFORMANCE VELVET 134136



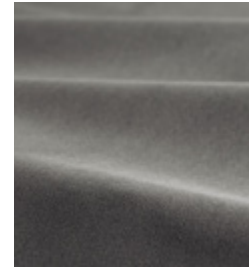
PERFORMANCE VELVET 134137



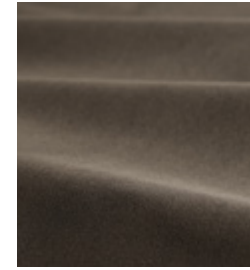
PERFORMANCE VELVET 134138



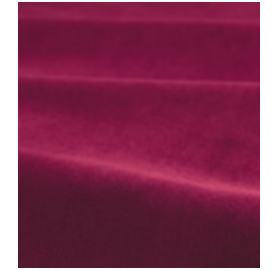
PERFORMANCE VELVET 134139



PERFORMANCE VELVET 134140



PERFORMANCE VELVET 134141



PERFORMANCE VELVET 134142



PERFORMANCE VELVET 134143



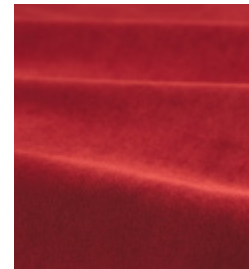
PERFORMANCE VELVET 134144



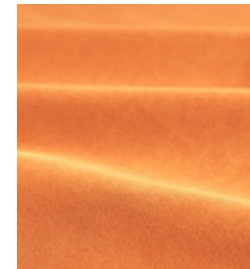
PERFORMANCE VELVET 134145



PERFORMANCE VELVET 134146



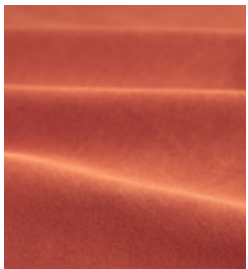
PERFORMANCE VELVET 134147



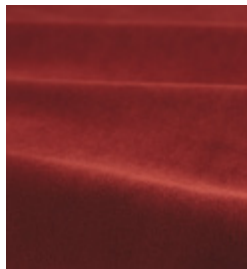
PERFORMANCE VELVET 134148



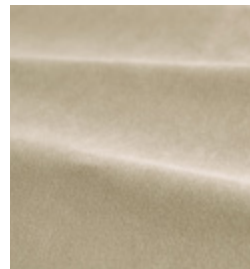
PERFORMANCE VELVET 134149



PERFORMANCE VELVET 134150



PERFORMANCE VELVET 134151



PERFORMANCE VELVET 134152



PERFORMANCE VELVET 134153



PERFORMANCE VELVET 134154



PERFORMANCE VELVET 134155

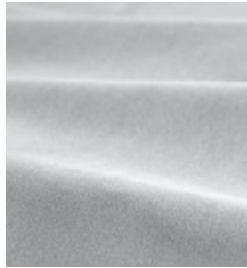


PERFORMANCE VELVET 134156

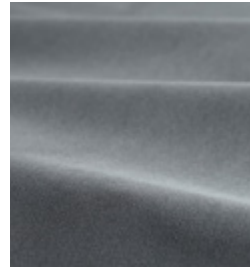
PERFORMANCE VELVETS INDEX



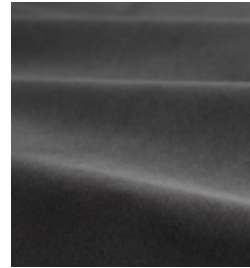
PERFORMANCE VELVET 134157



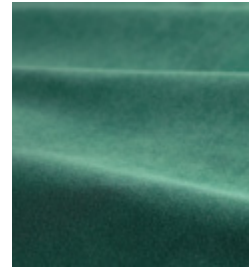
PERFORMANCE VELVET 134158



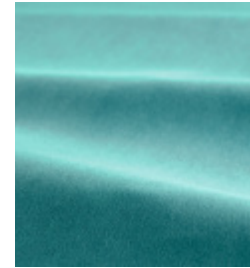
PERFORMANCE VELVET 134159



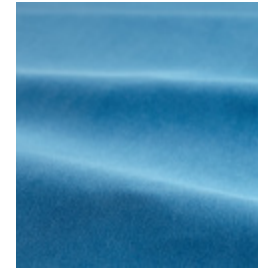
PERFORMANCE VELVET 134160



PERFORMANCE VELVET 134161



PERFORMANCE VELVET 134162



PERFORMANCE VELVET 134163



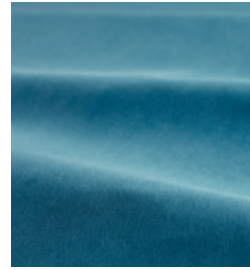
PERFORMANCE VELVET 134164



PERFORMANCE VELVET 134165



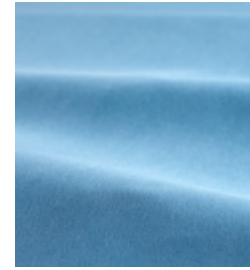
PERFORMANCE VELVET 134166



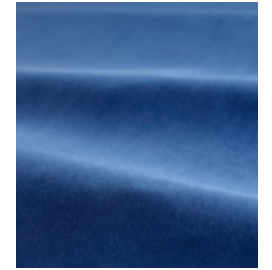
PERFORMANCE VELVET 134167



PERFORMANCE VELVET 134168



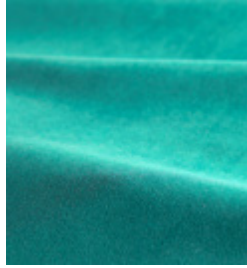
PERFORMANCE VELVET 134169



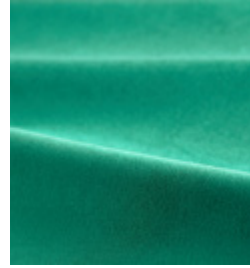
PERFORMANCE VELVET 134170



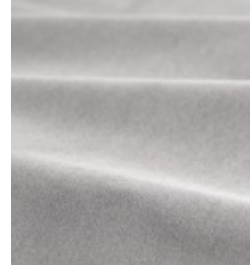
PERFORMANCE VELVET 134171



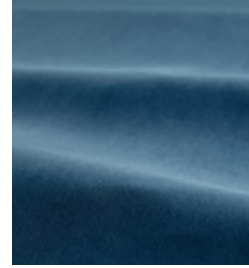
PERFORMANCE VELVET 134172



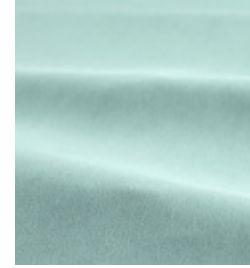
PERFORMANCE VELVET 134173



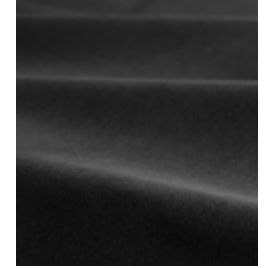
PERFORMANCE VELVET 134174



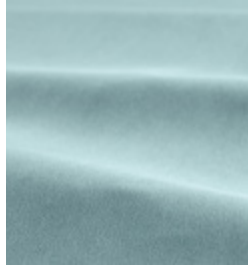
PERFORMANCE VELVET 134175



PERFORMANCE VELVET 134176



PERFORMANCE VELVET 134177



PERFORMANCE VELVET 134178



LONDON SHOWROOM

Design Centre Chelsea Harbour, First Floor,
South Dome, Lots Road, London, SW10 0XE

Tel: + 44 203 903 3700

showroom@sandersondesigngroup.com

PARIS SHOWROOM

19 Rue Du Mail 75002 Paris, France

Tel: +44 (0)203 093 1840

NEW YORK SHOWROOM

D&D Building, 979 3rd Avenue,
Suite 905, New York, NY 10022

Tel +1 212 319 7220

sales-ny@sandersondesigngroup.com

CHICAGO SHOWROOM

222 Merchandise Mart Place,
Suite 6-117A, Chicago, IL 60654

Tel +1 312 929 2058

sales-chicago@sandersondesigngroup.com

NETHERLANDS SHOWROOM

ETC Licht & Interieur, Randweg 20,
4104 AC Culemborg

Tel: +31 65349 3696

international@sandersondesigngroup.com

GERMANY SHOWROOM

Kronenstrasse 4, 76133 Karlsruhe

Tel: +49 721 981 985 60

verkauf@sandersondesigngroup.com

[@harlequinfw](https://www.instagram.com/harlequinfw) | [harlequin.sandersondesigngroup.com](https://www.harlequin.sandersondesigngroup.com)