



HARLEQUIN

COLOUR 3

DIGITAL DESIGN BOOK





HARLEQUIN

#OWNTHEROOM WITH HARLEQUIN COLOUR 3, NEW FOR AW22.

Journey along the Silk Road on a voyage of design discovery and experience our favourite interpretations of the ancient trading route.

Bringing the joy of self-expression into the home, Harlequin makes it easier than ever to create a space that represents who you are. Inspired by Silk Road treasures, local crafts, enticing compositions and gorgeous pattern, Colour 3 is a collection that sings of adventure.

Empowering homeowners to think differently, stunning new fabrics and wallpapers in a bold, confident palette share a global traveller feel. Beautiful ethnic and Asian inspired patterns work in harmony, alongside sumptuous velvets, contrasting textures and a handcrafted aesthetic.

Claire Greenfield, head of design at Harlequin explains, "The collection starts with our hero design, 'Journey of Discovery' - it's a beautiful storytelling piece, exquisitely hand painted in our studio. Like a map of the Silk Road, the design charts our voyage from the Hanging Gardens of Babylon and the Tower of Babel to geishas, goddesses and emperors, snow leopards, giant pandas and the mythical Chinese dragon. The collection includes a fantastic range of embroideries too, such as Khorol, Kumo and Michi, which are all influenced by the handicrafts found along the Silk Road."

Continuing to champion individuality, Harlequin Colour 3 owns the room once again with its designs and colourways carefully edited into one of four signature 'looks'. Named Rewild, Retreat, Renew and Reflect, each look enables customers to discover how they can #OWNTHEROOM in a way that makes them feel fantastic. In addition, Harlequin's 'Own the Room' quiz has been updated, enabling consumers to go online and discover which looks best represents who they are.

As with its previous colour collections, Colour 1 and Colour 2, Harlequin continues to work with colour scientist, Professor Stephen Westland, with his specially commissioned whitepaper titled 'Is the colour of your home making you happy?' informing a range of colourways.

THE LAUNCH COMPRISES TWO BOOKS:

Wallpaper: Harlequin Colour 3

Fabric: Harlequin Colour 3

ALL WALLPAPERS AND PRINTED FABRICS ARE DESIGNED AND MANUFACTURED IN ENGLAND.

To see the collection in its entirety, please visit
[harlequin.sandersondesigngroup.com](https://www.harlequin.sandersondesigngroup.com)
#harlequincolour #OWNTHEROOM

HARLEQUIN

COLOUR 3

Four signature looks, one unique you.

#OWNTHEROOM

REWILD



REFLECT



RETREAT



RENEW



REWILD

Appreciate the beauty of nature with invigorating, confident shades, brimming with life affirming energy. An infusion of Harissa, Emerald, Azul, Ionian and Amazonia warm and refresh our minds and our interiors. Vibrant designs, daring, uninhibited and joyous, unleash their patterned indulgence, filling our homes with layered bursts of glorious technicolour.



KIMIKO

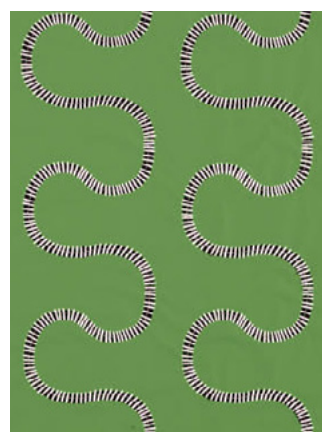
Perfect for curtains, blinds and cushions, Perception's two colour crewel work is reminiscent of artisan embroidery. Produced on a cotton satin base, the design's chunky stitching looks wonderful when paired alongside our Perception wallpaper.

GET YOUR LOOK



KIMIKO

112938



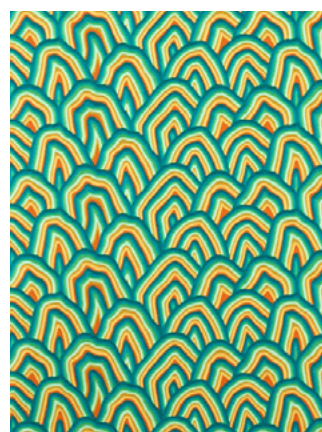
MICHI

133912



SERPENTI

121139



KUMO

133908



EMPOWER

133588



COLOUR PROPORTIONS





JOURNEY OF DISCOVERY

Like a map of the Silk Road, this wallpaper charts our voyage of discovery in a remarkably ornate piece of hand painted cartography. The Hanging Gardens of Babylon sit alongside the Tower of Babel, surrounded by geishas, goddesses and emperors, snow leopards, giant pandas and the mythical Chinese dragon.

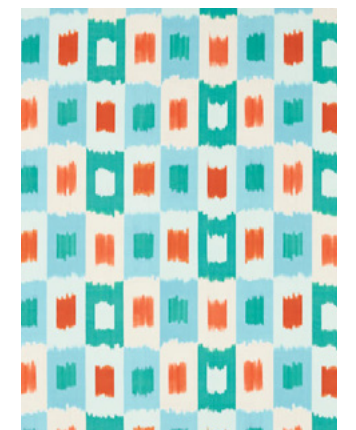
GET YOUR LOOK



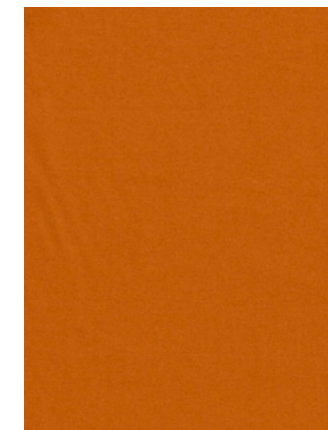
JOURNEY OF DISCOVERY 121125



KUMO 133908



SHIRUKU 121128



EMPOWER 133596



CALATHEA 121138



COLOUR PROPORTIONS

MANZARA

Diffused inks create a beautiful large scale ombre with a relaxed, tonal movement and ethereal feel. This atmospheric wallpaper panel resembles painted parchment, providing a stunning backdrop to all styles of interior.

GET YOUR LOOK



MANZARA

112917



JOURNEY OF DISCOVERY 112920



KIMIKO 112939



KHOROL 133906



SHIRUKU 121129



COLOUR PROPORTIONS





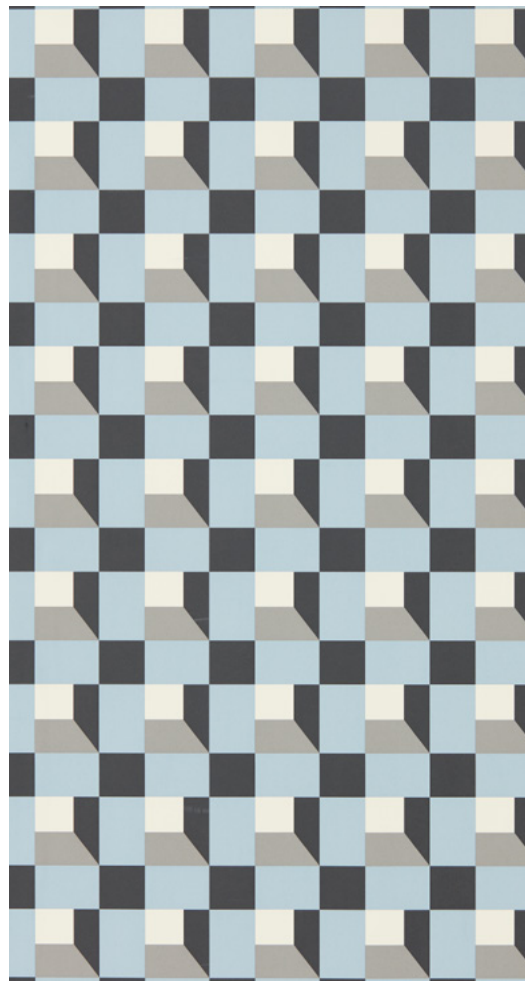
REFLECT

The perfect tonic to our fast-paced lives, obscured organic patterns and architectural influences layer alongside gentle textures to create a harmonious look that blends edgy angularity with transitional design. Continuing with a structured hand that's inspired by the abstract world, Cornflower, Black Earth, Grounded and Sketched bring an expressive consistency to this modern

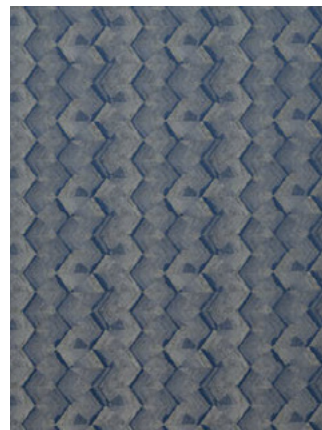
BLOCKS

With a strong architectural look, this large scale checkerboard wallpaper is influenced by a traditional artisan weave. Layers of 3D blocks build to make a bold geometric pattern in a choice of three colourways.

GET YOUR LOOK



BLOCKS 112944



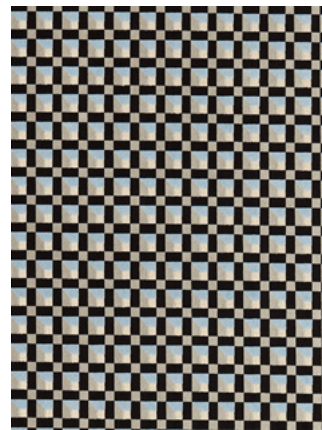
TANABE 132274



OSAMU 131439



COBRA 111167



BLOCKS 133898



COLOUR PROPORTIONS





MIZU

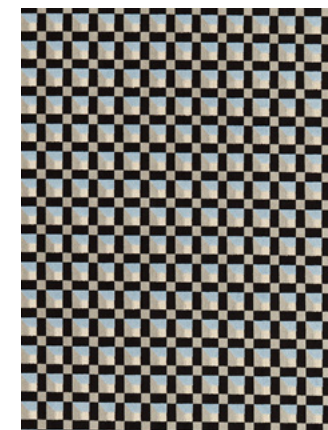
Meaning water in Japanese, Mizu is a woven take on a traditional shibori. Representative of traditional tie-dye method, matt threads contrast against the subtle water like shimmer of the fabric's ground, creating a large scale patten and a kaleidoscope-esque effect.

GET YOUR LOOK



MIZU

133902



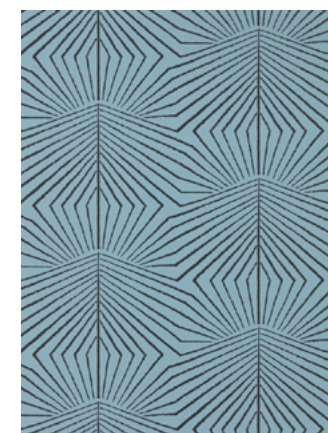
BLOCKS

133898



SERI

110769



DAWNING

112929



CUPOLA

132235



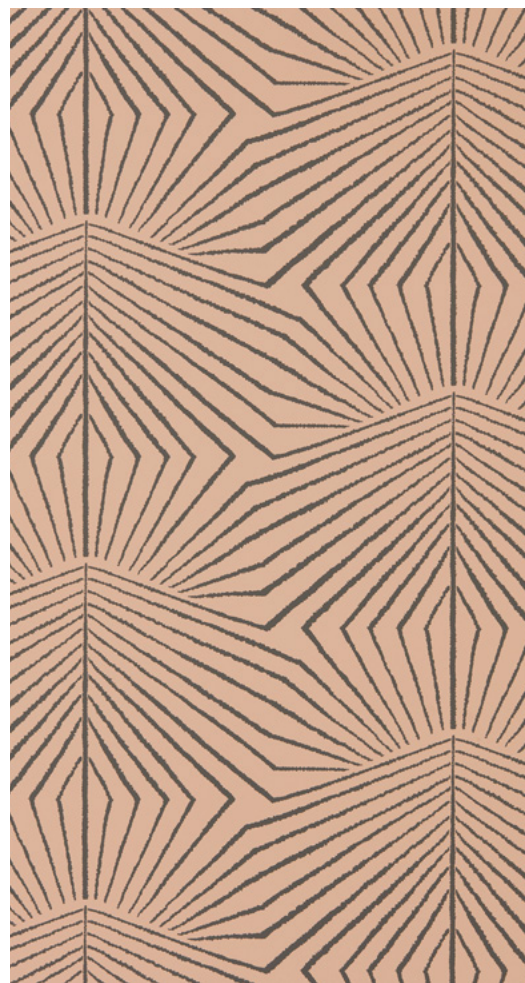
COLOUR PROPORTIONS

DAWNING

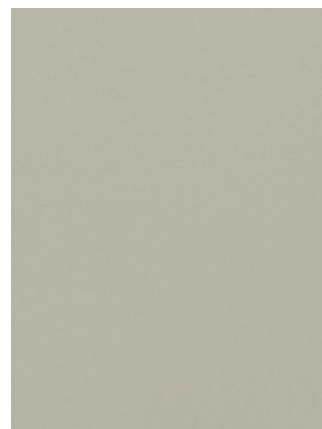
As the sun rises over the Silk Road, a diffusion of colour welcomes in the new day. Large scale, like the expansive sky, our inspiration for this design came from the cover of a tiny fragmented Japanese book housed in the Harlequin archive.

In a gorgeous set of chalky colours, Dawning's slightly geometric pattern is almost like refracted light.

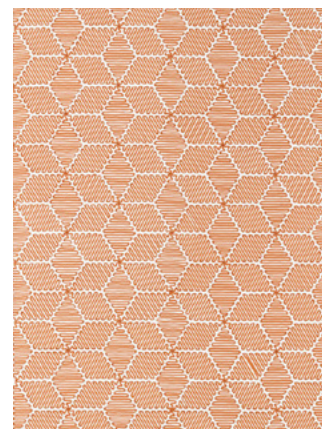
GET YOUR LOOK



DAWNING 112930



EMPOWER 133623



CUPOLA 132234



MICHI 133911



SERI 110771



COLOUR PROPORTIONS



RETREAT

A tranquil palette of naturally elegant colour, Retreat's adaptive look shares a floral inspired intensity, accented with hints of metallics. Classic Cornflower and Fuchsia pinks team with laidback shades such as Bleached Coral and Fig Blossom, sharing an understated glamour across youthful and traditional schemes. This look creates personal hideaways that are calm, peaceful and timeless.



MANZARA

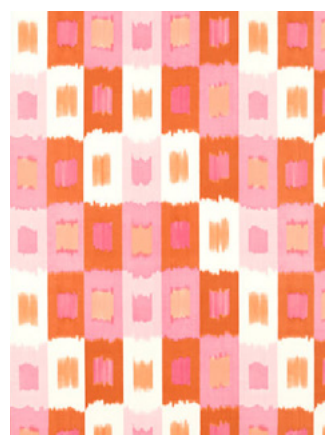
Diffused inks create a beautiful large scale ombre with a relaxed, tonal movement and ethereal feel. This atmospheric wallpaper panel resembles painted parchment, providing a stunning backdrop to all styles of interior.

GET YOUR LOOK



MANZARA

112918



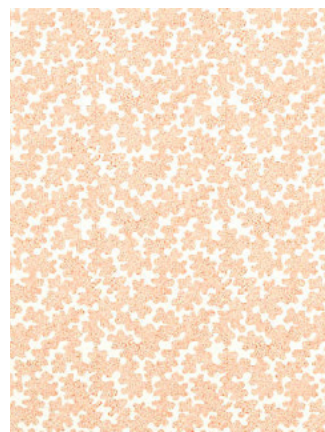
SHIRUKU

121131



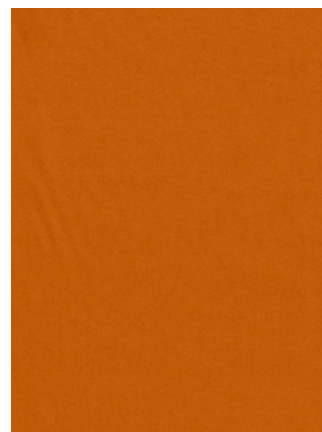
JOURNEY OF
DISCOVERY

121126



ZORI

121134



EMPOWER

133596



COLOUR PROPORTIONS





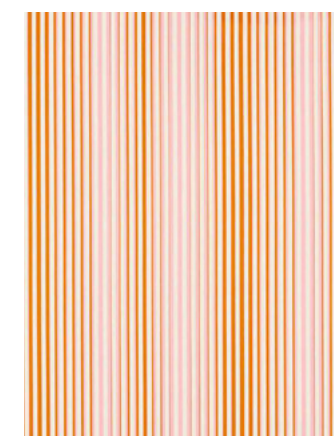
JOURNEY OF DISCOVERY

Like a map of the Silk Road, this print charts our voyage of discovery in a remarkably ornate piece of hand painted cartography. The Hanging Gardens of Babylon sit alongside the Tower of Babel, surrounded by geishas, goddesses and emperors, snow leopards, giant pandas and the mythical Chinese dragon.

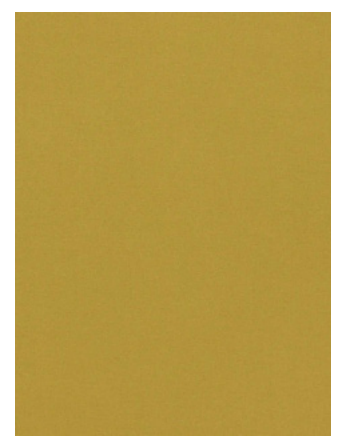
GET YOUR LOOK



JOURNEY OF DISCOVERY 121126



CALLA 133893



EMPOWER 133589



AZUL 132012



SERPENTI 121141

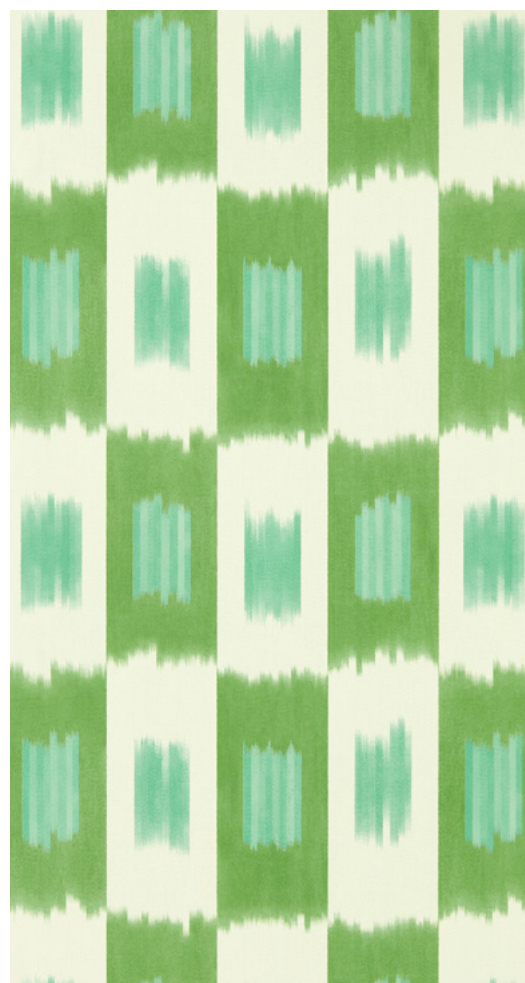


COLOUR PROPORTIONS

SHIRUKU

A fusion of traditional and contemporary design, Shiruku is a large scale interpretation of a traditional Uzbekistani silk. Archive inspired and complete with a printed grain that retains the same woven texture as the original, this beautifully soft dual purpose emerised cotton is a wonderful colour coordinator.

GET YOUR LOOK



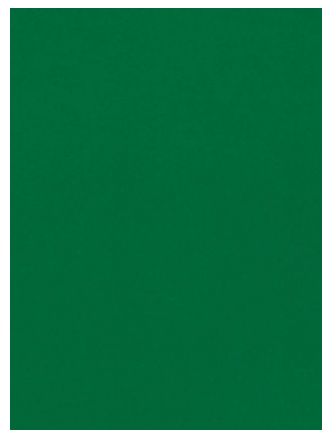
SHIRUKU

112921



KUMO

112927



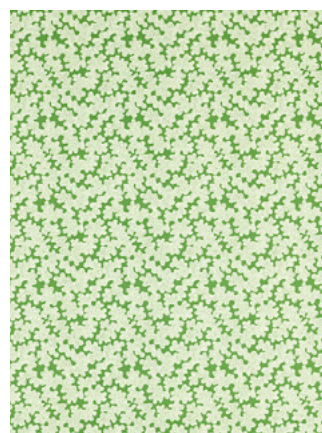
EMPOWER

133588



MELOGRANO

112923



ZORI

121133



COLOUR PROPORTIONS





RENEW

Uplifting, regenerative and with a natural, light and airy glow, Celestial, Tree Canopy and Silver Willow make Renew their home. With muted elegant and ethereal tones, this calming look combines soft relaxing colours with subtly detailed design.

FLOURISH

Coral meets stylised botanicals in this large scale, interpretive wallpaper. Inspired by authentic Asian patterns, hand painted florals repeat to create a slightly naive trail that's surface printed in a range of beautifully soft hues.

GET YOUR LOOK



FLOURISH 112935



EMPOWER 133609



FLOURISH 112937



KHOROL 133905



ELOISE 121143



COLOUR PROPORTIONS





KHOROL

Displaying a coral reef across a linen look ground, Khorol is a beautifully versatile fabric that's soft to the touch. With an elegant drape, its finely embroidered edges add a lovely highlight element to each tonal coral piece, building to create a contemporary stripe effect.

GET YOUR LOOK



KHOROL 133904



MELOGRANO 121143



FLOURISH 112935



EMPOWER 133613



ZORI 112932



COLOUR PROPORTIONS

MELOGRANO

A contemporary interpretation of fruits found along the Silk Road, pomegranates, figs and lichees mingle in this modern toile wallpaper, hand drawn in pen.

GET YOUR LOOK



MELOGRANO 112924



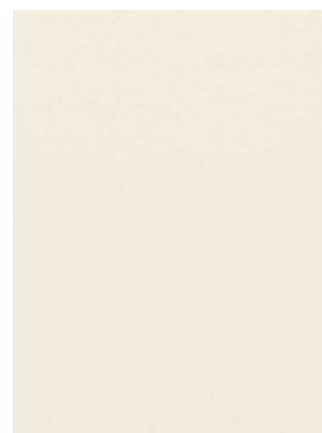
ELOISE 131541



FLOURISH 121145



FLOURISH 112936



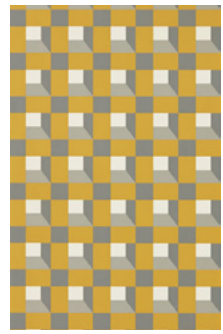
EMPOWER 133608



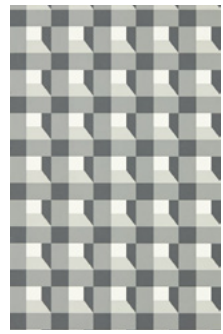
COLOUR PROPORTIONS



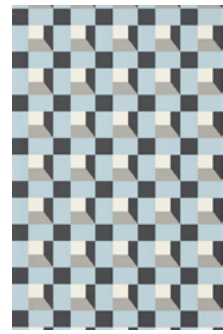
WALLPAPER INDEX



BLOCKS 112942



BLOCKS 112943



BLOCKS 112944



COBRA 111166



COBRA 111167



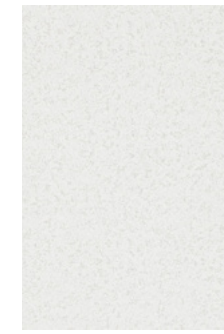
COBRA 111168



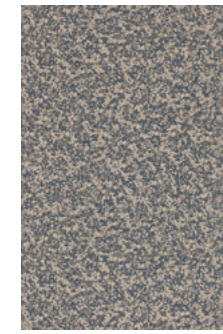
COBRA 111169



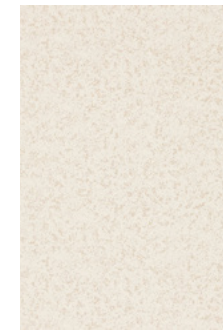
COBRA 111170



CORAL 110764



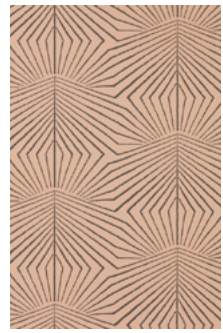
CORAL 110762



CORAL 110763



DAWNING 112929



DAWNING 112930



DAWNING 112931



ENIGMA 110104



ENIGMA 110108



FLOURISH 112935



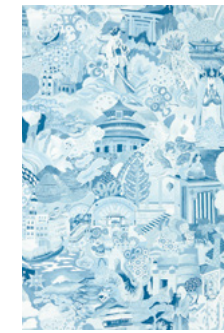
FLOURISH 112936



FLOURISH 112937



JOURNEY OF DISCOVERY 112919



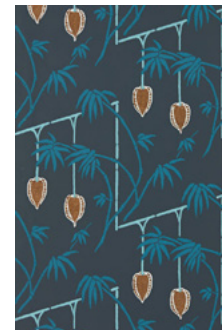
JOURNEY OF DISCOVERY 112920



KIMIKO 112938



KIMIKO 112939



KIMIKO 112940



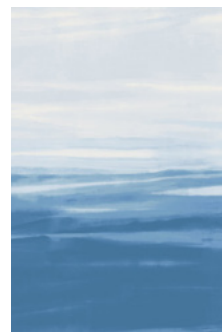
KIMIKO 112941



KUMO 112927



KUMO 112928



MANZARA 112917



MANZARA 112918



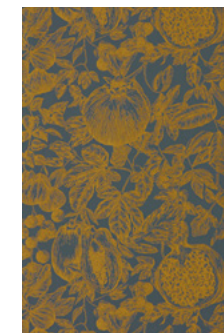
MELOGRANO 112923



MELOGRANO 112924



MELOGRANO 112925



MELOGRANO 112926



SERI 110767



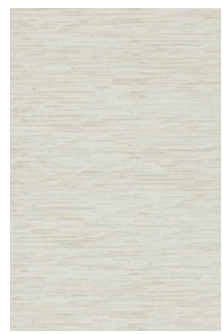
SERI 110769



SERI 110771



SERI 110772



SERI 110773



SERI 110775



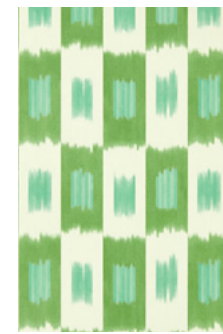
SERI 110776



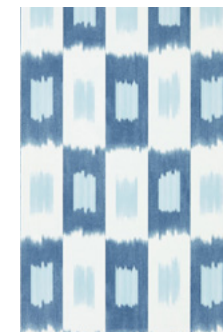
SERI 110777



SERI 111863



SKIRUKU 112921



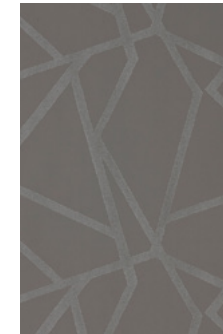
SKIRUKU 112922



SUMI 110885



SUMI 111572



SUMI 111571



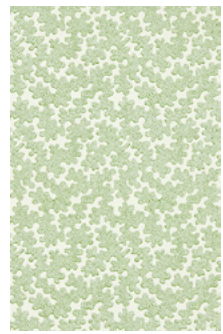
TRELIS 110379



ZORI 112932



ZORI 112933



ZORI 112934

FABRIC INDEX



AUCUBA 132239



AUCUBA 132240



AUCUBA 132241



AUCUBA 132242



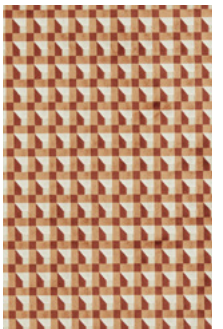
AUCUBA 132249



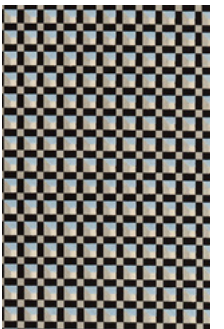
AZUL 132012



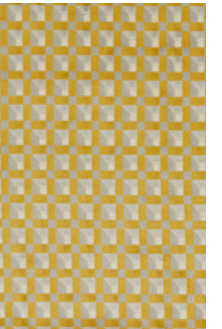
AZUL 132013



BLOCKS 133897



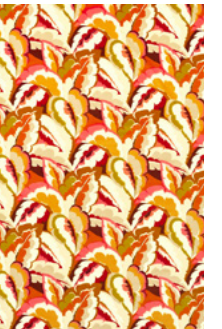
BLOCKS 133898



BLOCKS 133899



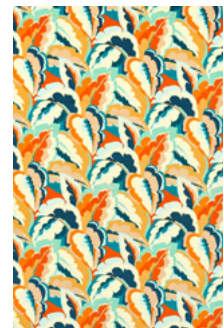
BLOCKS 133900



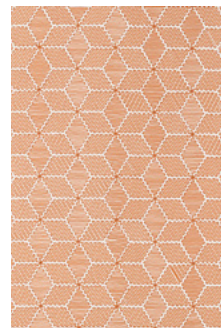
CALATHEA 121136



CALATHEA 121137



CALATHEA 121138



CUPOLA 132234



CUPOLA 132235



ELOISE 131541



ELOISE 131543



ELOISE 131545



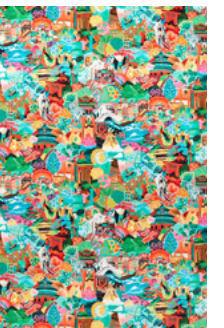
FLOURISH 121145



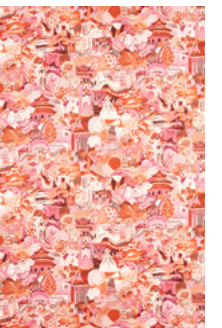
FLOURISH 121146



FLOURISH 121147



JOURNEY OF DISCOVERY 121125



JOURNEY OF DISCOVERY 121126



JOURNEY OF DISCOVERY 121127



KHOROL 133904



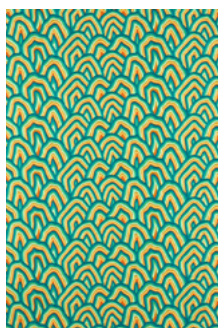
KHOROL 133905



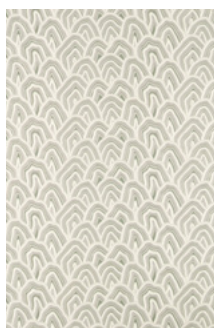
KHOROL 133906



KUMO 133907



KUMO 133908



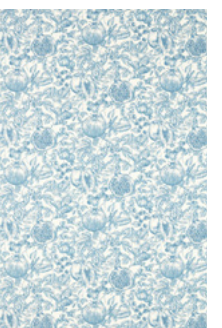
KUMO 133909



MELOGRANO 121142



MELOGRANO 121143



MELOGRANO 121144



MICHI 133911



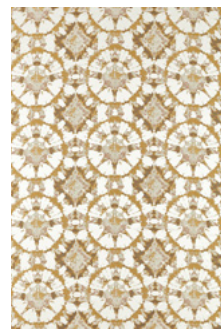
MICHI 133912



MIZU 133901



MIZU 133902



MIZU 133903



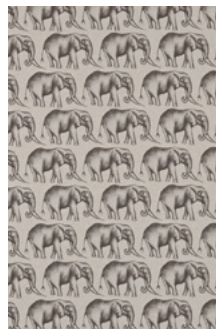
OSAMU 131440



OSAMU 131441



OSAMU 131439



SAVANNA 120345



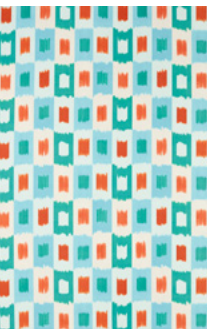
SERPENTI 121139



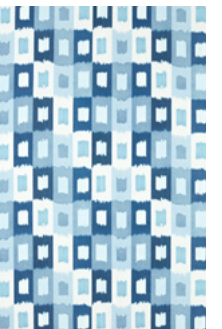
SERPENTI 121140



SERPENTI 121141



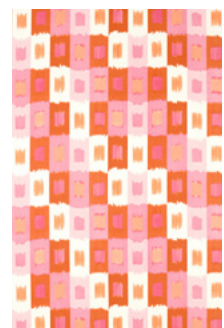
SHIRUKU 121128



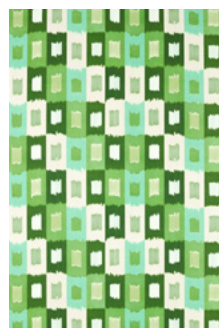
SHIRUKU 121129



SHIRUKU 121130



SHIRUKU 121131



SHIRUKU 121132



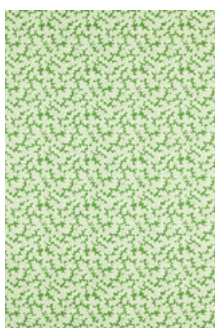
TANABE 132274



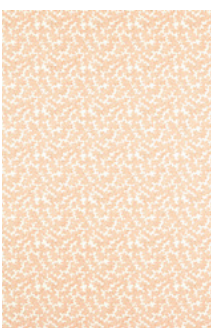
TANABE 132276



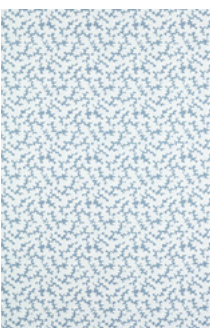
TAKARA 131368



ZORI 121133



ZORI 121134



ZORI 121135

CONTACT INFORMATION

SANDERSON DESIGN GROUP HEAD OFFICE

Chalfont House, Oxford Road,
Denham UB9 4DX
Tel: + 44 (0) 20 3457 5862

PRESS OFFICE

Email: press@sandersondesigngroup.com
Tel: + 44 (0) 1895 221005

CONSUMER & TRADE ENQUIRIES

Email: enquiries@sandersondesigngroup.com
For further information:
brand.sandersondesigngroup.com
To find your nearest stockist:
brand.sandersondesigngroup.com/find-a-retailer

LONDON SHOWROOM

Design Centre Chelsea Harbour, First Floor,
South Dome, Lots Road, London, SW10 0XE
Tel: + 44 203 903 3700
Email: showroom@sandersondesigngroup.com

NEW YORK SHOWROOM

D&D Building, 979 3rd Avenue, Suite 409
New York, NY 10022
Tel +1 212 319 7220
sales-ny@sandersondesigngroup.com

CHICAGO SHOWROOM

222 Merchandise Mart Place, Suite 6-117
Chicago, IL 60654
Tel +1 312 929 2058
sales-chicago@sandersondesigngroup.com

DUBAI SHOWROOM

The Prism Tower, Office 2708, Floor 27,
PO Box 391982, Business Bay, Dubai,
United Arab Emirates
Tel: +971 4361 9766
Email: infome@sandersondesigngroup.com

NETHERLANDS SHOWROOM

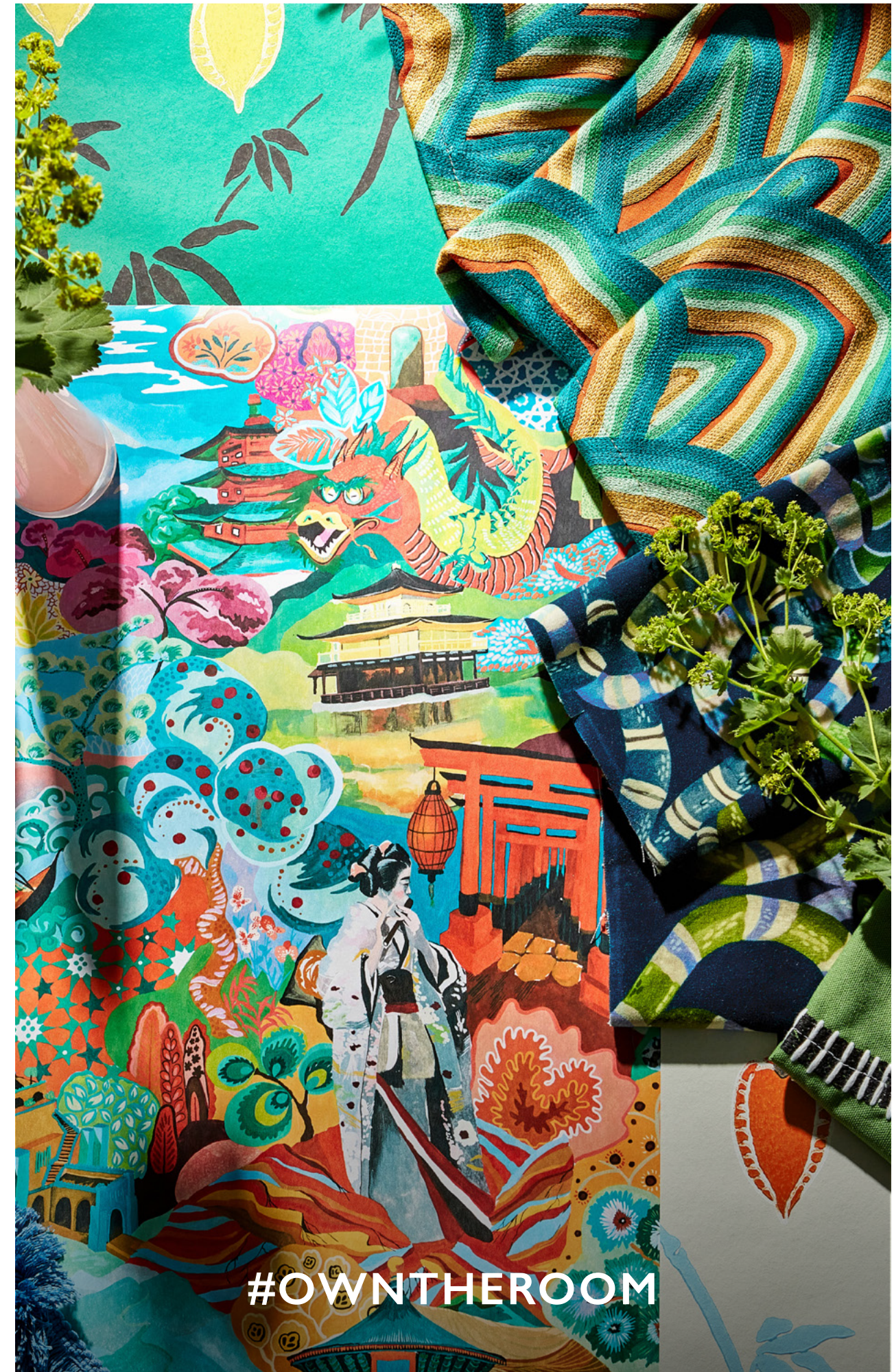
ETC Licht & Interieur, Randweg 20,
4104 AC Culemborg
Tel: +31 65349 3696
Email: international@sandersondesigngroup.com

GERMANY SHOWROOM

Kronenstrasse 4, 76133 Karlsruhe
Tel: +49 721 981 985 60
Email: verkauf@sandersondesigngroup.com

Harlequin.sandersondesigngroup.com

A PROUD MEMBER OF SANDERSON DESIGN GROUP



#OWNTHEROOM